

GS-Tank Atomizer User Manual

Notice for Use

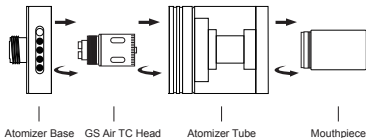
Thank you for choosing Eleaf products! Please read this manual carefully before use so as to use correctly. If you require additional information or have questions about the product or its use, please consult your local agents, or visit our website at www.eleafworld.com.

Product Introduction

The GS-Tank atomizer is a newly engineered GS series atomizer. It is 22mm in diameter with liquid capacity of 3ml and working wattage from 30W to 40W. Its transparent glass atomizer tube allows you to clearly see the liquid consumption with a simple glance. The GS Air TC head with pure cotton wick will make the GS-Tank atomizer compatible with various temperature control batteries, especially iStick TC40W.

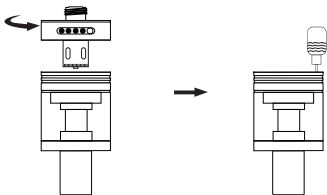
How to assemble

1. First mount the GS Air TC head onto the atomizer base;
2. Then put together atomizer base, atomizer tube and mouthpiece;
3. Finally assemble GS-Tank atomizer and battery together.



How to add liquid

1. First unscrew the atomizer base off the GS-Tank atomizer;
 2. Then slowly refill the liquid into the hole along the tube;
 3. Finally screw the atomizer base onto the GS-Tank atomizer again.
- (Note: Please don't add liquid into the air pipe and don't overfill.)



How to adjust airflow

The amount of airflow can be adjusted by rotating the airflow control ring on the atomizer base so as to get different vaping experience.

Precautions

1. Only have your GS-Tank atomizer repaired by Eleaf. Do not attempt to repair the unit by yourself as damage or personal injury may occur.
2. Do not leave the GS-Tank atomizer in high temperatures or damp conditions, otherwise it may be damaged. The appropriate operation temperature is within -10°C to 60°C while using.
3. Do not attempt to combine the GS-Tank atomizer with parts from other brands of e-cigarettes. If it is damaged in this way, our company will not take on responsibility and your warranty will be void.

Warranty

We are not responsible for any damages caused by human error. Legal warranty is applied.

Email: info@ismoka.com
Web: www.eleafworld.com



MADE IN CHINA

Manufactured by iSmoka